



ECOCERT
GREENLIFE
LIZ.NO. 151702



MADE IN
GERMANY



Feel the nature

ATHLETIC WEAR MADE FROM MERINO WOOL AND SILK


ENGEL SPORTS



Made in Germany with Environmental Certification

For over 35 years, Engel has been manufacturing underwear from natural fibers to the highest ecological standards - out of respect both for skin and for nature. These products have also been available for many years in the outstanding blend of merino wool and silk.

A high-performance line of athletic wear designed for sports and outdoor activities made from soft, 100% non-scratch fabric is now being produced and sold under the name **ENGEL SPORTS**. This line of apparel utilizes a new material made from superfine merino fibers that are only 17.5 microns thick and combined with exquisite silk, allowing the wearer to experience the ultimate in comfort. The merino wool comes from certified organic livestock in South America. The sheep

are shorn according to strict animal welfare guidelines by specially trained shearers. The shearing is accompanied by direct supervision.

ENGEL SPORTS garments are manufactured in Germany in compliance with the strictest criteria for socially responsible labor practices and ecological production, and the entire manufacturing process is certified under the Global Organic Textile Standard (GOTS). All **ENGEL SPORTS** products are also awarded Grüner Knopf.



ECOCERT GREENLIFE
LIZ.NO. 151702



MADE IN
GERMANY

WER FÜHRT PRODUKTE MIT DEM BIEREL:

GRÜNER KNOPF
SOZIAL, ÖKOLOGISCH, STAATLICH
UNABHÄNGIG ZERTIFIZIERT



Bundespreis
ecodesign
Produkt 2015





Feel and experience nature

The combination of merino wool and silk results in maximum breathability, comfortably insulating the wearer against temperature extremes. The inclusion of 2% elastane in the athletic wear, shirts and tights reinforces the natural elasticity of the wool fibers and guarantees that they will retain their shape extremely well in movement.

ENGEL SPORTS products provide the highest level of functionality for nearly every type of athletic activity, both indoors and out. The superlative properties of the material and the fitting design allow the garments to adapt to the body, conforming to the wearer's every movement. The natural properties of the wool/silk blend prevent bacteria from settling, which greatly

reduces the buildup of odor caused by sweat. These garments don't need to be washed very often - simply airing them outdoors will make them seem like new again. The wool fibers absorb UV radiation naturally, protecting against the damaging effects of sunlight on the skin.

Depending on the particular garment, the athletic wear made from fine merino wool and silk is available in three different weights: a lighter fabric weight of 150 g/m² and the somewhat heavier and warmer weights of 200 g/m² and 240 g/m².





The lightweight all-rounder

Superfine and extremely light - with a fabric weight of only 150g/m², these garments make an ideal base layer - the first layer that is worn directly against the skin. These stretchy, high-performance base layer pieces won't wear out, and conform to every movement without constricting. Lightweight and yet cozy and warming, this material made from superfine merino wool and silk is exceptionally effective in supporting your skin functions by regulating body temperature and managing moisture.

TANK TOP // SLIM FIT



- Material: 70% merino wool // 28% silk // 2% elastane
- Fabric weight: 150g/m²
- Base Layer

Item ESW 15020 1021 // Size S, M, L, XL, XXL

Color 9900 - black

Color 5900 - lime

Color 2400 - tango red



TOP // REGULAR FIT

racerback



Item ESW 15020 1010 // Size S, M, L, XL

Color 9900 - black *

Color 8100 - sky *

* Seams in contrasting colors

ENGEL SPORTS SIZES



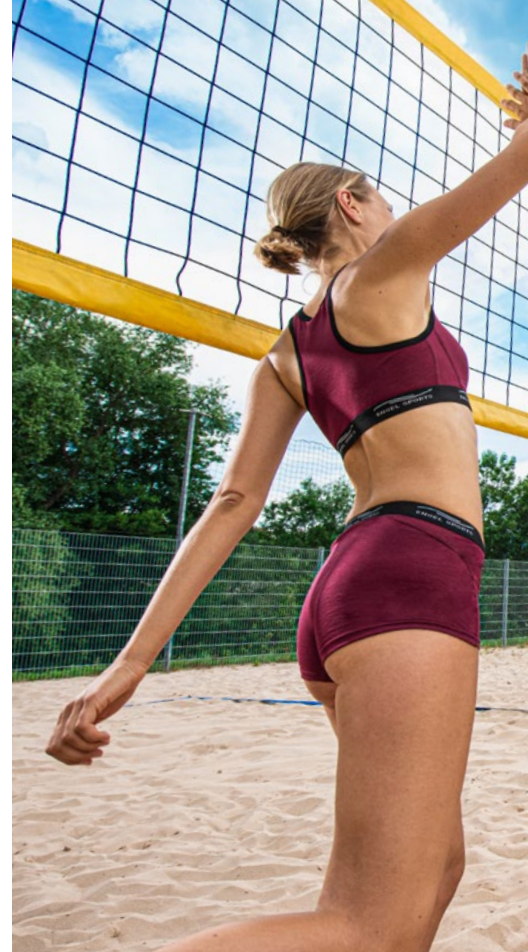
| WOMEN'S | S | M | L | XL | XXL |
|---------|-------|--------|---------|---------|---------|
| Bust | 82-88 | 88-94 | 94-100 | 100-106 | 106-112 |
| Waist | 66-72 | 72-78 | 78-84 | 84-90 | 90-96 |
| Hips | 90-96 | 96-102 | 102-108 | 108-114 | 114-120 |
| Inseam | 78-82 | 78-82 | 78-82 | 78-82 | 78-82 |

Height for women 167-174



| MEN'S | S | M | L | XL | XXL |
|--------|---------|---------|---------|---------|---------|
| Height | 166-172 | 170-176 | 174-182 | 180-186 | 184-190 |
| Chest | 90-96 | 96-102 | 102-108 | 108-114 | 114-120 |
| Waist | 78-84 | 84-90 | 90-96 | 96-102 | 102-108 |
| Hips | 94-100 | 100-106 | 106-112 | 112-118 | 118-122 |
| Inseam | 76-78 | 78-80 | 80-82 | 82-84 | 84-86 |

To determine your clothing size, measure your height, around your waist, hips, and bust/chest, and your inseam, then find the clothing size that corresponds to your measurements. All measurements are in cm.



WOMEN'S // 150

SHIRT // REGULAR FIT
short sleeve



Item ESW 15020 1121 // Size S, M, L, XL, XXL

Color 9900 - black

Color 8100 - sky

Color 5900 - lime

Color 2400 - tango red



BUSTIER



Item ESW 15020 1910 // Size S, M, L, XL

Color 9900 - black

Color 2400 - tango red

HOT PANTS



Item ESW 15020 1611 // Size S, M, L, XL

Color 9900 - black

Color 2400 - tango red



TANK TOP // SLIM FIT



Item. ESM 15020 2020 // Size S, M, L, XL

Color 9900 - black *

Color 8100 - sky *

* Seams in contrasting colors

SHIRT // REGULAR FIT

short sleeve



Item ESM 15020 2121 // Size S, M, L, XL, XXL

Color 9900 - black

Color 8100 - sky

Color 2400 - tango red



BOXER



Item. ESM 15020 2620 // Size S, M, L, XL

Color 9900 - black *

* Seams in contrasting colors

WASHING

Machine washable at 40 °C (approx. 100 °F) with wool detergent, thanks to a state-of-the-art fabric finishing process that adds no harmful and toxic chemicals



Quick-drying

Because garments made from a wool/silk blend will seem like new again after being aired outdoors, they require washing far less often



Wear under or over

With a fabric weight of 200g/m², these pieces can be worn directly against the skin or as a mid and outer layer over lighter-weight items, depending on how cold or warm you feel. This fabric is more robust and substantial than the 150g/m² version, offering more room for air pockets that provide thermal insulation. The fine, soft blend of merino wool and silk protects against overcooling, insulating against temperature extremes no matter the weather conditions.

HOOD JACKET

long sleeve, fluffy brushed inside



- Material: 70% merino wool // 28% silk // 2% elastane
- Fabric weight: 200g/m²
- Mid and Outer Layer

Item ESW 20010 5465 // Size S, M, L, XL, XXL

Back key pocket with zipper

Material: 70% merino wool // 30% silk // without elastane

Color 9920 - black *

Color 2499 - tango red *

* Seams in contrasting colors



ZIP-SHIRT // SLIM FIT

long sleeve with zipper



Item ESW 20020 3266 // Size S, M, L, XL

Color 9900 - black

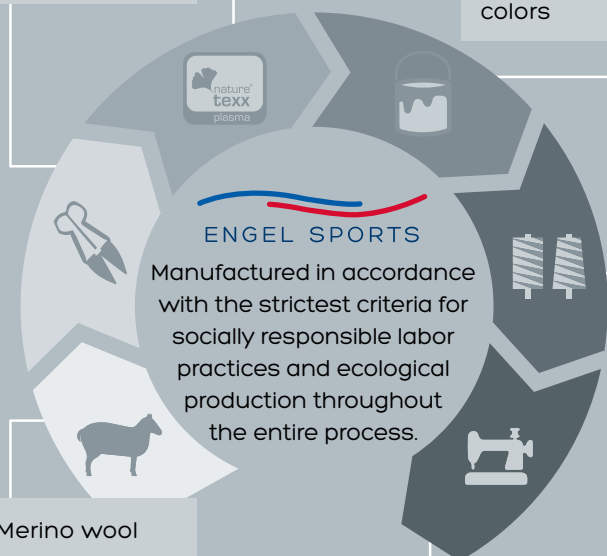
Color 2400 - tango red

THE SUSTAINABLE PATH OF ENGEL SPORTS APPAREL

Sheep shearing according to the strictest animal welfare guidelines

Treating the wool with Naturetexx

Dyeing process with health-friendly and environmentally friendly colors



Merino wool from certified organic livestock in South America

Manufactured in Germany

Spinning of the wool with the silk



WOMEN'S // 200

SHIRT // REGULAR FIT
long sleeve



Item ESW 20020 3162 // Size S, M, L, XL, XXL

Color 9900 - black

Color 8100 - sky

Color 2400 - tango red



LEGGINGS

3/4 length



Item ESW 20020 3841 // Size S, M, L, XL, XXL

Back key pocket
Color 9900 - black

LEGGINGS

long



Item ESW 20020 3861 // Size S, M, L, XL, XXL

Back key pocket
Color 9900 - black



Cover up with Natural Fibers

Opaque, breathable and fashionable: with a fabric weight of 240 g/m², these jackets, hoodies, hiking skirts, pants and tights make an ideal upper layer for yoga, jogging, hiking and other free-time activities. The wondrous blend of cuddly soft merino wool and smooth, robust silk conforms perfectly to every movement without restricting freedom of movement in the least. The products provide very good insulation, preventing premature cooling, regulating a comfortable temperature, and thereby ensuring the ultimate comfort.

- Material: 70% merino wool // 28% silk // 2% elastane
- Fabric weight: 240g/m²
- Upper Layer

JACKET long sleeve



Item ESW 24020 5466 // Size S, M, L, XL, XXL

Color 9900 - black



HOODY
long sleeve



Item ESW 24020 5260 // Size S, M, L, XL

Color 2300 - rosso

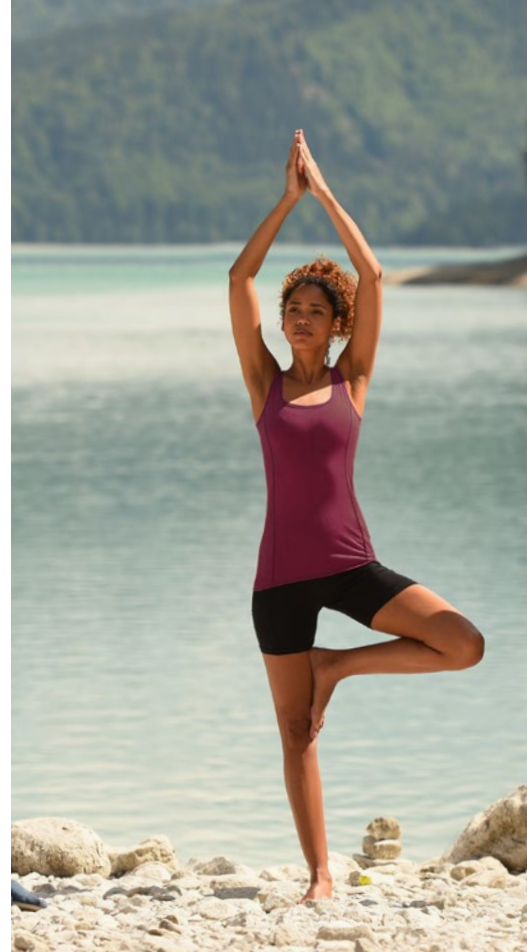
HIKING SKIRT



Item ESW 24020 5740 // Size S, M, L, XL

Color 9900 - black

Color 2300 - rosso



YOGA PANTS

long



Item ESW 24020 5862 // Size S, M, L, XL, XXL

High-cut, elastic turned-down waistband and cuffs on the leg

Color 9900 - black

Color 7400 - acqua // not in size XXL

SPORT TIGHTS

long



Item ESW 24020 5860 // Size S, M, L, XL, XXL

Elastic waistband with drawcord and back key pocket

Color 9900 - black

Color 2300 - rosso // not in size XXL



UNISEX // 200

POCKET HAT

unisex



Item ESU 20020 9010 // Size 1 (one size)

Color 9900 - black

Color 9500 - silver stone *

Color 8100 - sky *

* Seams in contrasting colors

Color 5900 - lime *

Color 2400 - tango red *

Color 2000 - spicy *

LOOP SCARF

unisex



Item ESU 20020 9120 // Size 1 (one size)

Color 9900 - black

Color 9500 - silver stone *

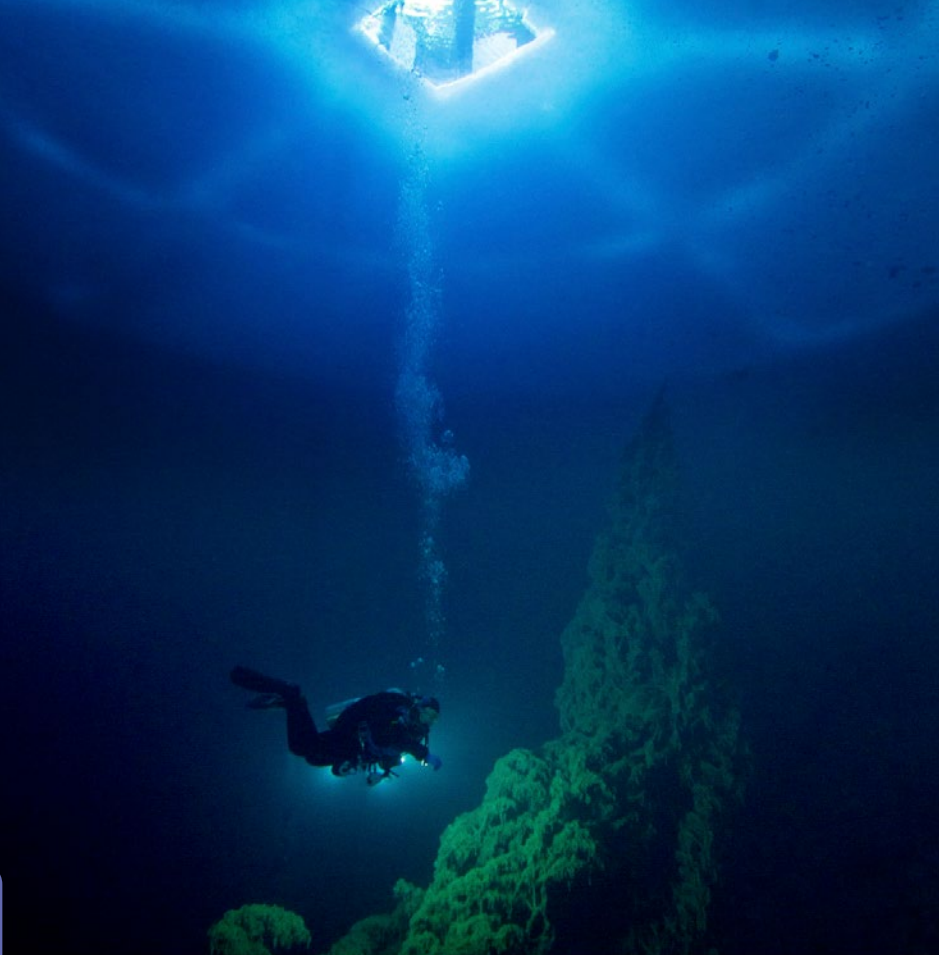
Color 8100 - sky *

* Seams in contrasting colors

Color 5900 - lime *

Color 2400 - tango red *

Color 2000 - spicy *



SHIRT // REGULAR FIT
long sleeve



Item ESM 20020 4162 // Size S, M, L, XL, XXL
Color 9900 - black
Color 8100 - sky
Color 2400 - tango red



ZIP-SHIRT // SLIM FIT
long sleeve with zipper



Item ESM 20020 4266 // Size S, M, L, XL

Color 9900 - black

Color 8100 - sky *

* Seams in contrasting colors



HOOD JACKET

long sleeve, fluffy brushed inside



Item ESM 20010 6465 // Size S, M, L, XL, XXL

Back key pocket with zipper

Material: 70% merino wool // 30% silk // without elastane

Color 9959 - black *

* Seams in contrasting colors

LEGGINGS

3/4 length



Item ESM 20020 4841 // Size S, M, L, XL, XXL

Back key pocket

Color 9900 - black



LEGGINGS

long



Item ESM 20020 4861 // Size S, M, L, XL, XXL

Back key pocket
Color 9900 - black

FEEL THE NATURE

Natural UV protection



Seams in contrasting colors

Made in Germany

Back key pocket with zipper

Chest pocket with zipper

Regulates body temperature and manages moisture

2-way-zipper

All Hood Jackets feature thumbholes



JACKET
long sleeve



Item ESM 24020 6466 // Size S, M, L, XL, XXL

Color 9900 - black

HOODY
long sleeve



Item ESM 24020 6260 // Size S, M, L, XL

Color 7400 - acqua



SPORT TIGHTS

long



Item ESM 24020 6860 // Size S, M, L, XL, XXL

Color 9900 - black

Color 7400 - acqua // not in size XXL

Elastic waistband with drawcord
and back key pocket



(027 1409) // www.zetbe // Printed on 100 % recycling paper

Feel the nature

ENGEL SPORTS is a trademark of Engel GmbH

Underwear and clothing in natural fibers
Wörthstraße 155, D-72793 Pfullingen
Phone +49 (0) 71 21-3 87 87-7 // Fax -87
info@engel-sports.com // www.engel-sports.com


ENGEL SPORTS


ENGEL